



WEST-COAST ENGINEERING WORKS (P) LIMITED.

Manufacturers & Exporters
Since 1974



CABLE TRAY MANAGEMENT SYSTEMS

STANDARD RANGE OF PERFORATED TYPE CABLE TRAY

Duty (D)	Width in mm (w)	Height in mm (h)	Thickness in mm (t)	Length in mm (l)	Lip in mm (L)
LD Light Duty	25	25	1.2	2500	N.A
	50	25		3000	
	100	50			
MD Medium Duty	150	50	1.6	2500	N.A
	200			3000	
	250				
	300				
HD Heavy Duty	350	50	2	2500	N.A
	400			3000	
	450				
	500				
XHD Extra Heavy Duty	550	100	3.0	2500	15mm
	600			3000	

● ACCESSORIES

- Our supply includes Coupler Plates & Fasteners.
- Accessories such as Bend/Tee/Elbow are optional as per requirement.

● RAW MATERIALS & FINISH

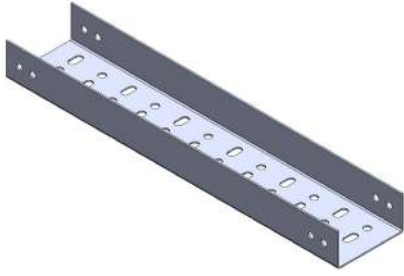
- Mild Steel duly hot dip galvanized as per IS 2062, EN 10025, ASTM A123/ISO 1461 with coating as per 80 microns (μ).
- Stainless Steel as per BSEN 10088-2 with 304/316 grade.
- Aluminium Alloy as per BSEN 485-1 with AA1100, AA8011, A3105 grade.

● FEATURES

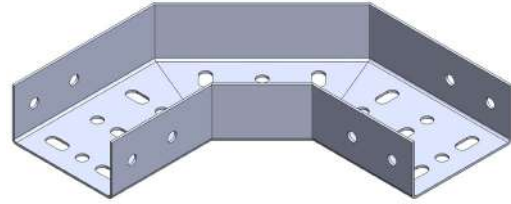
- Maximizes ventilation for dissipation of heat generated by charged electric cables.
- Easy to install with less cost & negligible maintenance.
- High capacity to accommodate maximum no of cables.
- Superior quality, follows International standard – EN 61537-2007.



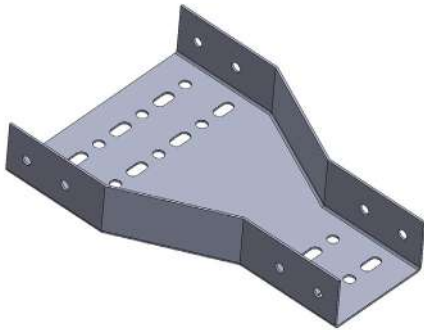
PERFORATED TYPE CABLE TRAY



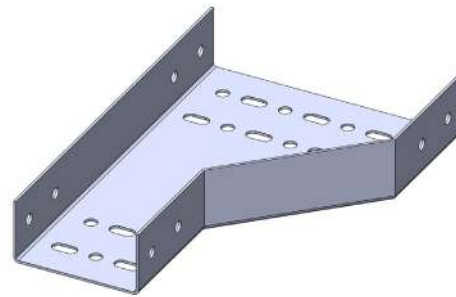
STRAIGHT CABLE TRAY



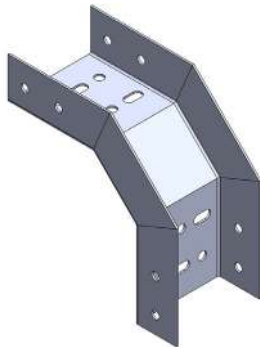
90 ELBOW



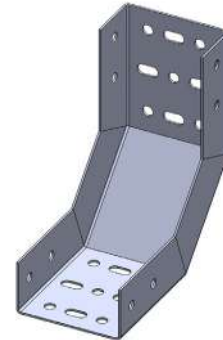
EQUAL REDUCER



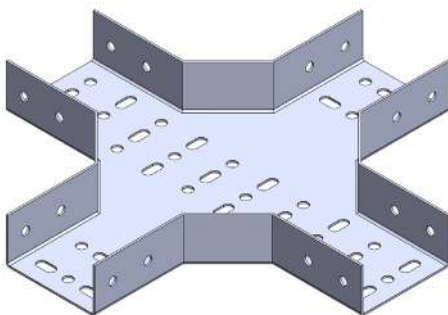
ONE SIDE REDUCER



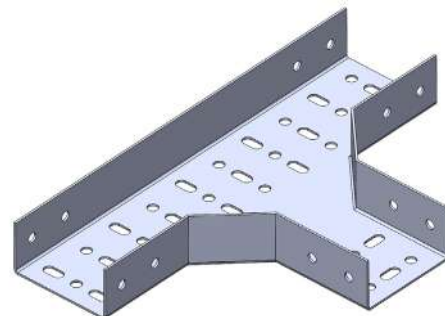
OUTSIDE RAISER



INSIDE RAISER



EQUAL CROSS



EQUAL TEE



STANDARD RANGE OF LADDER TYPE CABLE TRAY (STRINGER SIZE)

Duty (D)	Width in mm (w)	Height in mm (h)	Thickness in mm (t)	Length in mm (l)	Lip in mm (L)
LD Light Duty	150	50	1.5	2500 3000	N.A
	200	75	1.6		
	250	100	2		
	300				
MD Medium Duty	350	75	2	2500 3000	N.A
	400	100	2.5		
HD Heavy Duty	450	100 150	2.5	2500 3000	N.A
	500		3		
	550				
	600				
XHD Extra Heavy Duty	650	100 150	3.0	2500 3000	N.A
	700				
	750				

● ACCESSORIES

- Our supply includes Coupler Plates & Fasteners.
- Accessories such as Bend/Tee/Elbow are optional as per requirement.

● RAW MATERIALS & FINISH

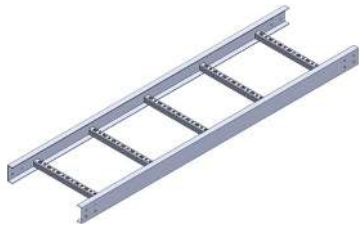
- Mild Steel duly hot dip galvanized as per IS 2062, EN 10025, ASTM A123/ISO 1461 with coating as per 80 microns (μ).
- Stainless Steel as per BSEN 10088-2 with 304/316 grade.
- Aluminium Alloy as per BSEN 485-1 with AA1100, AA8011, A3105 grade.

● FEATURES

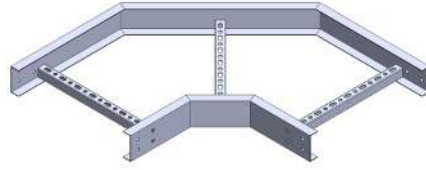
- Maximizes ventilation for dissipation of heat generated by charged electric cables.
- Easy to install with less cost & negligible maintenance.
- High capacity to accommodate maximum no of cables.
- Superior quality, follows International standard – EN 61537-2007.



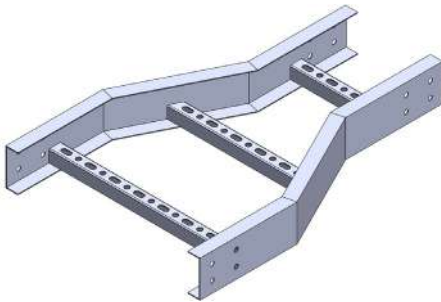
LADDER TYPE CABLE TRAY



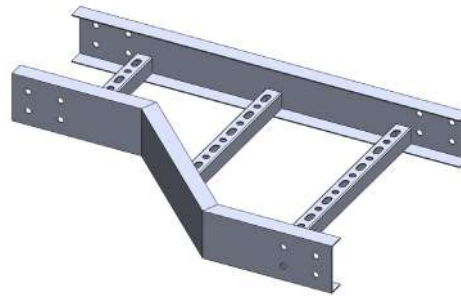
STRAIGHT CABLE TRAY



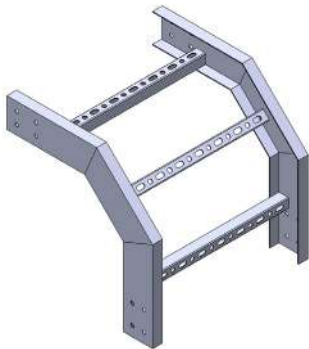
90 ELBOW



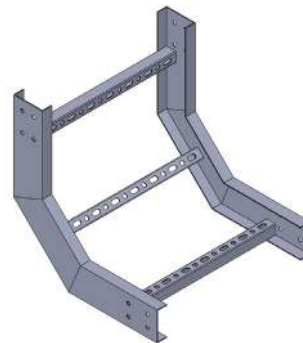
EQUAL REDUCER



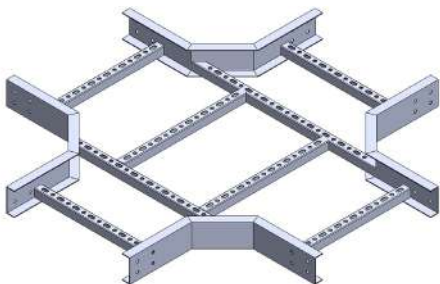
ONE SIDE REDUCER



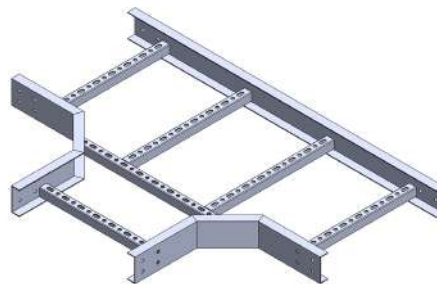
OUTSIDE RAISER



INSIDE RAISER



EQUAL CROSS



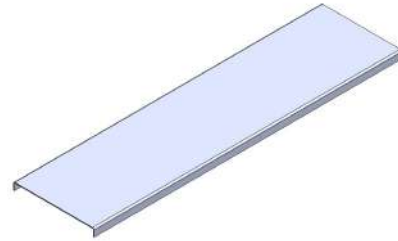
EQUAL TEE



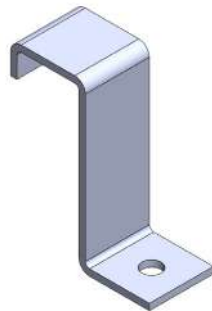
ACCESSORIES & SUPPORT SYSTEMS



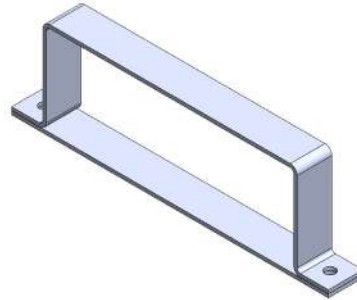
COUPLER



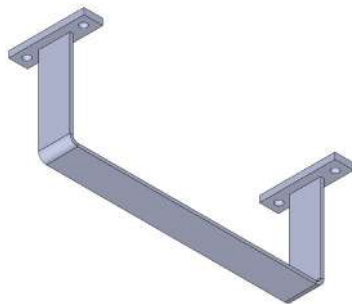
CABLE TRAY COVER



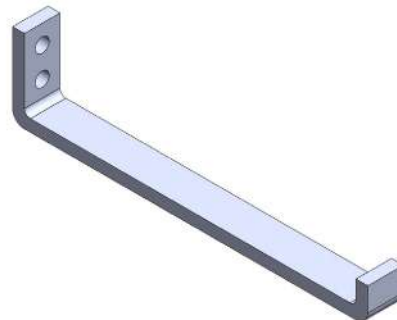
J-CLAMP



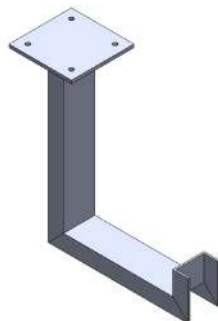
C-CLAMP SET



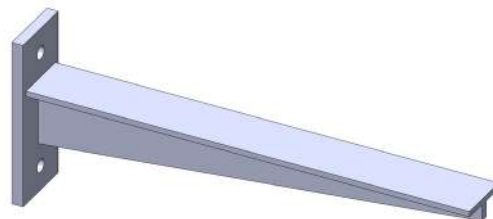
BRACKET FOR CIELING



SIDE SUPPORT BRACKET



VERTICAL MOUNTED SUPPORT

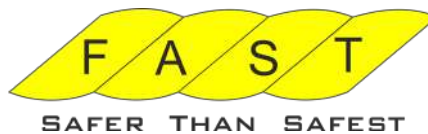


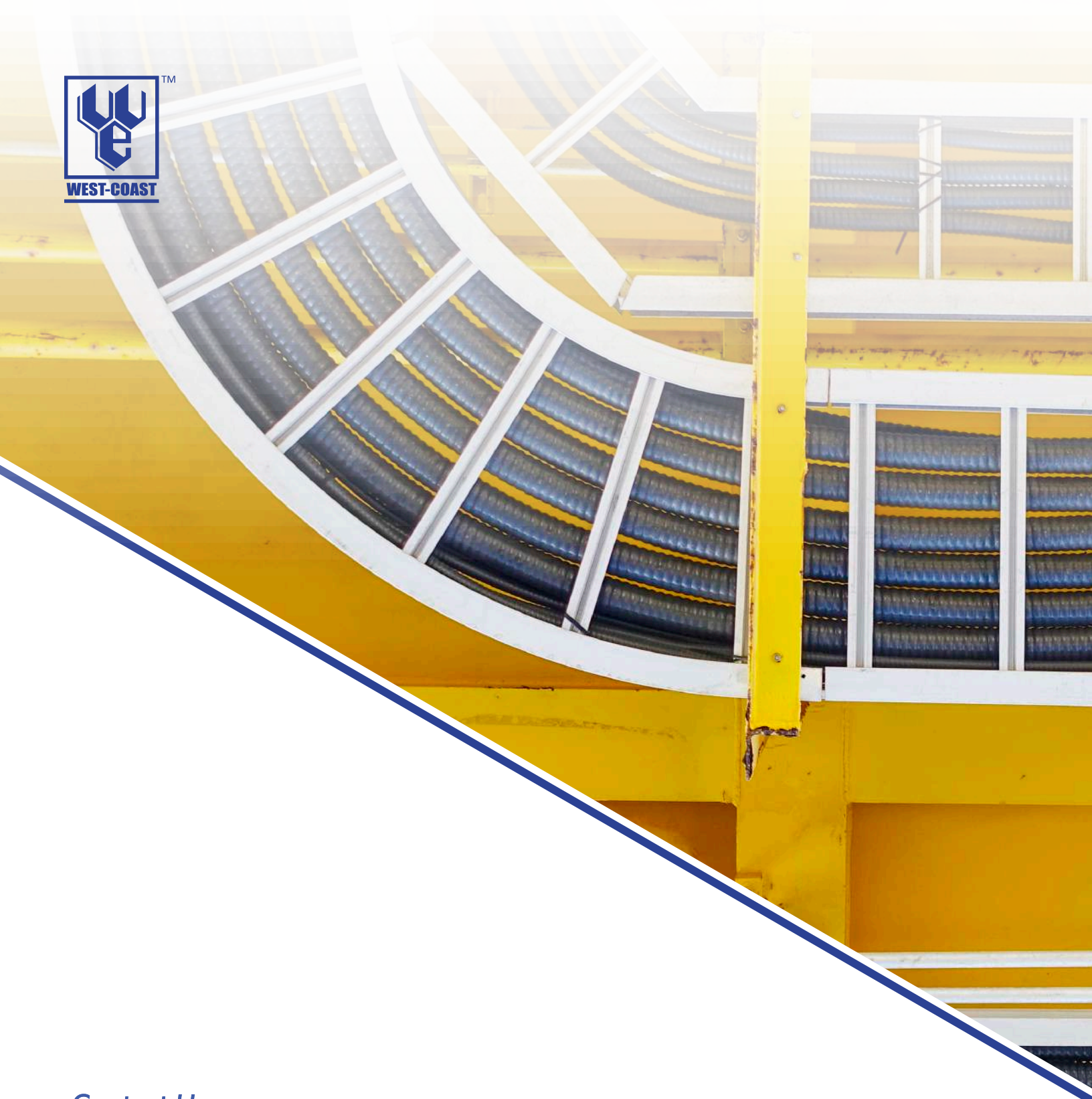
HORIZONTAL MOUNTED SUPPORT





Some of Our Delighted Clients





Contact Us

☎ +91 8369872923 | +91 9820675767 | +91-22-66663045/46

✉ info@westcoastengworks.com | sales@westcoastengworks.com

🌐 <https://westcoastengworks.in/>

📍 G - 10, New Udyog Mandir No.2, Behind Johnson and Johnson Bldg,
Mogul Lane, Mahim, Mumbai - 400016, Maharashtra, India

