



WEST-COAST ENGINEERING WORKS (P) LIMITED.

Manufacturers & Exporters
Since 1974



Welcome to West-Coast Engineering Works Pvt Ltd., where innovation and excellence converge to craft a diverse range of Industrial and Solar products tailored for various applications.

With over 50 years of rich experience since our inception in 1974, our humble journey has been extraordinary today, driven by a vision of engineering greatness.

As trusted consultants, we collaborate closely with customers to deliver top technological designs & effective efficient solutions. With a portfolio of over 30 best-sellers and a commitment to continuous innovation.

Welcome aboard to our engineering voyage!



Purpose

To be a leading MANUFACTURER & EXPORTER for the World Class Quality products mainly of Aluminium and Stainless Steel.

Mission

Passionate about achieving the highest standards of Quality, everything we do must be fair, honest, and transparent in our conduct.

Vision

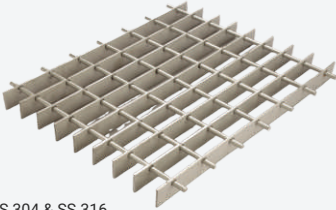
West Coast has a vision to be recognized as one of the most innovative enterprises working with the highest ethical standards.

Aluminium Grating *ALUGRATE*™



Material Grade : Aluminium Alloy AA6063 T6, AA6005 T6, AA 6082 T6
Design Code : BS EN 4592
Loading Criteria : 1kN to 2 kN per Sqm

Stainless Steel SS 304/316 Grating



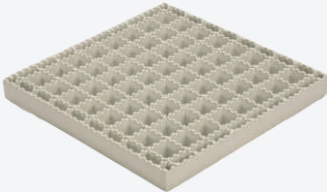
Material Grade : SS 304 & SS 316
Design Code : BS EN 4592
Loading Criteria : 1 kN to 10 kN

Heelproof Grating



Material : Aluminium Alloys, HDG Steel & Stainless Steel
Design Code : BS EN 4592
Loading Criteria : 2 kN to 10 kN

ANTI*SKID* Grating™



Material Grade : Aluminium Alloy AA6063 T6, AA6005 T6, AA6061 T6, AA6082 T6
Design Code : BS EN 4592
Loading Criteria : 2 kN to 10 kN per Sqm

GRATINGS
COVERS
INFRA
SOLAR
GARDENGINEERING
LIFELINE



Aluminium Façade Catwalk Grating



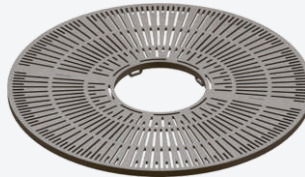
Material Grade : Aluminium AA6063 T6, AA6005 T6, AA6061 T6, AA6082 T6
Design Code : BS EN 4592 and conforms to EN 516
Loading Criteria : 1kN to 2 kN per Sqm

Alu-Deck Platform Grating



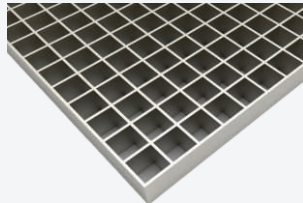
Material Grade : Aluminium Alloy AA6063 T6, AA6005 T6, AA6061 T6, AA6082 T6.
Design Code : BS EN 4592
Loading Criteria : 1 kN to 10 kN per Sqm

Tree Grating



Material Grade : Aluminium Alloys and Stainless Steel
Design Code : BS EN 4592 & FACTA Class
Loading Criteria : 1 kN to D400

Mild Steel Heavy Duty Grating



Material : HDG Steel
Design Code : Material conforms to J 225
Loading Criteria : 2 kN to 10 kN

Roof Hatch Cover



Material Grade : Aluminium Alloy , HDG Steel & Stainless Steel
Design Code : BS EN 1474, EN 516
Loading Criteria : 100 kg

Access Cover



Material Grade : Aluminium Alloy AA6063 T6, AA6005 T6, AA6061 T6, AA6082 T6, HDG Steel.
Design Code : BS EN 4592, BS EN 1474
Loading Criteria : 1 kN to 10 kN per Sqm



COVERS

INFRA

SOLAR

GARDENGINEERING

LIFELINE



Recess Covers



Material Grade : Aluminium Alloy & Stainless Steel

Design Code : As per FACTA

Loading Criteria : B125 to D400

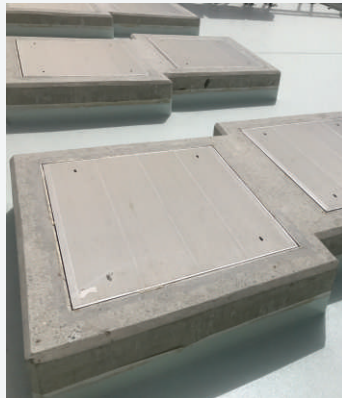
Chequered Plate Platform



Material Grade : Aluminium Alloy, HDG Steel & Stainless Steel

Design Code : As per FACTA

Loading Criteria : B125 to D400



Industrial Handrail



Material Grade: Aluminium Alloy AA6063 T6, AA6005 T6, AA6061 T6, AA6082 T6, HDG Steel, etc.
Design Code: BS EN 1474, EN 516, OSHA 1910
Loading Criteria: 900 N

Industrial Ladder with Safety Cage



Material Grade: Aluminium Alloy AA6063 T6, AA6005 T6, AA6061 T6, AA6082 T6, HDG Steel etc.
Design Code: BS EN 1474 & OSHA 3124-12R 2003
Loading Criteria: 2kN to 5kN point load on one rung

Cross Over Bridge



Material Grade: Aluminium Alloy AA6063 T6, AA6005 T6, AA6061 T6, AA6082 T6.
Design Code: BS EN AA1474
Loading Criteria: 2 to 5 kN/Sqm

STP Air Vent (SUPRA VENT)



Material Grade: Aluminium Alloy AA6063 T6, HDG Steel, SS304 & SS316



Road Barrier



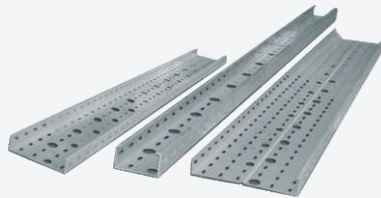
Material Grade : Aluminium Alloy AA6063 T6, AA6082 T6, HDG Steel, SS304 & SS316
Loading Criteria : 2 Ton

Guardrail for Motorways *MOTORAIL*



Material Grade : Aluminium Alloy AA6063 T6, AA6082 T6, HDG Steel, SS304 & SS316
Loading Criteria : 2 Ton

Cable Tray



Material Grade : Aluminium Alloy, Stainless Steel & HDG Steel



Rooftop Aluminum Walkway



Material Grade : Aluminium Alloy AA6063 T6, AA6005 T6, AA6061 T6, AA6082 T6.
Design Code : BS EN 4592 and conforms to EN 516
Loading Criteria : 1.5 to 2.5 kN/Sqm



Material : Aluminium Alloy AA6063 T6, AA6082 T6, HDG Steel, SS 304 & SS 316.
Design Code : BS EN 1474
Loading Criteria : Wind Speed 140 km/hr

James Car-port®



Material : Aluminium Alloy AA6063 T6, AA6082 T6, HDG Steel, SS304 & SS316.
Design Code : BS EN 1474
Loading Criteria : Wind Speed 140 km/hr

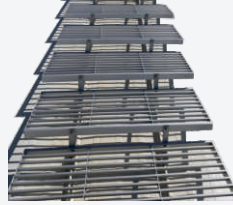
WC-GAL Walkway



Material Grade : Galvalume with 0.9mm Thick
Design Code : BS EN 4592 and conforms to EN 516
Loading Criteria : 1 kN/Sqm

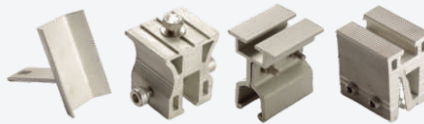


Step Walkway



Material Grade : AA6063 T6, AA6005 T6, AA6082 T6, HDG Steel, SS 304 & SS 316
Design Code : BS EN 4592 and conforms to EN 516
Loading Criteria : 1.5 to 2.5 kN/Sqm

Aluminium Rooftop Clamps



Material Grade : Aluminium Alloy AA6063 T6
Design Code : BS EN 1474

Skylight Protection



Material : Aluminium Alloy AA6063 T6, HDG Steel, SS 304 & SS 316.
Design Code : EN ISO 1873:2014
Loading Criteria : 1 kN/Sqm

Aluminium Module Mounting Structure



Material Grade : Aluminium Alloy AA6063 T6
Design Code : BS EN 1474



Type 1 Landscape



Material Grade : Aluminium Alloy AA6063 T6, AA6005 T6, AA6061 T6, AA6082 T6, HDG Steel, SS 316 & SS 304.
Design Code : BS EN 8118, BS EN 1474



Type 2 Landscape



Material Grade : Aluminium Alloy AA6063 T6, AA6005 T6, AA6061 T6, AA6082 T6, HDG Steel, SS 316 & SS 304
Design Code : BS EN 8118, BS EN 1474



Vertical Lifeline Systems



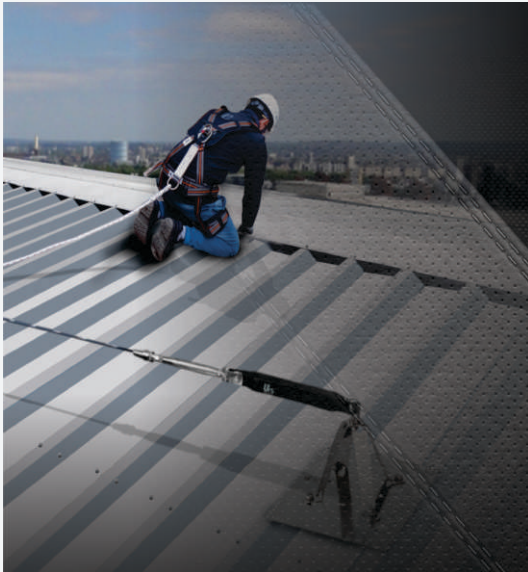
Material Grade : SS 316 & SS 304
Design Code : EN 353-1:2014
Loading Criteria : 23 kN



Horizontal Lifeline System



Material Grade : SS 316 & SS 304
Design Code : EN 353-1:2014
Loading Criteria : 23 kN





OUR GLOBAL PRESENCE

Approvals From Clients



Louis Berger, Qatar



Some of Our Delighted Clients





*Assurance,
Excellence,
Safety And
Innovation
Built In Every Product*



Contact Us

☎ +91 8369872923 | +91 9820675767 | +91-22-66663045/46

✉ info@westcoastengworks.com | sales@westcoastengworks.com

🌐 <https://westcoastengworks.in/>

📍 G - 10, New Udyog Mandir No.2, Behind Johnson and Johnson Bldg,
Mogul Lane, Mahim, Mumbai - 400016, Maharashtra, India

